



yes

Annual Report 2020

Contents

01 Our Vision

02 Leadership Review

02 Paul Blair, Chair of Services Trust

03 Sue Stanaway, Chair of Foundation Trust

03 Sir David Levene, Patron

04 Sonia Thursby, CEO

05 Our Reach

06 Our Impact

06 Supporting young people

07 I.LEAD

08 Parenting Project

08 IIDL Conference

08 I.Drive

08 Project Employ

11 Shore Junction

12 A special thanks

12 Get Involved

Our Vision

In New Zealand today 30% of young people under 25 have a disability. YES's vision is to create a collaborative community that is equitable for all New Zealanders. We want to actively support young people with disabilities and their whanau to take maximum control of their lives. We do this by running a number of programmes and support services to enable young people to reach their full potential.



Leadership Review

Paul Blair

Chair of Services Trust

2020 has been a huge year for YES, with our small but passionate team really stepping up to support our community, especially through the uncertainty created by the COVID-19 pandemic.

In early 2020 we refreshed our 2020-2023 strategy, placing leadership for young people with disabilities at the heart of our focus. YES's strategic clarity, great relationships within the sector and a brand for getting things done made us a go-to resource for the disabled community within the confusion of the COVID-19 lockdown.

Over the first four weeks of lockdown we provided trusted advice, made connections, solved problems and eased the burden for 5,100 vulnerable members of our disabled community. We created access to emergency funding, linked services to isolated individuals, supported people through serious mental health stress and were the hour-by-hour trusted provider of information in a complex and quickly changing environment.

Matching our new strategy and focus on young people with disabilities, we were delighted to attract Lucy Anastasidou-Hobbs, Joanne Mahon and Elissa Downey onto the board this year. Lucy, Jo and Elissa will add new skills and perspectives, in conjunction with our hard-working directors Linda, Robin, Jason, Sue and Gareth.

Our I.Lead programme has been nationally recognised, with the Ministry of Youth Development's 2020-2023 Youth Plan focussing on four priority groups, including young people with disabilities aged 17-24. The action 'collaborate with disabled rangatahi to facilitate change across Government' identifies I.Lead as the exclusive partner to the Office of Disability Issues (as lead agency) in progressing the recommendations that the I.Lead committee made to Government in 2019.

With generous sponsorship from Davanti Consulting we have launched a new customer relationship management system. This system allows us to track, manage and improve delivery of services to our community. With support from Benefitz, we will be launching a refreshed website by the end of the year and we are applying for grant funding to significantly lift our digital capability to deliver services.

I'm really proud that the team have taken the great work that has been done by YES and are telling these stories through a social return on investment / impact reporting lens (see example on [page 09](#)). Using conservative assumptions, backed by Government databases on the cost and impact of various interventions, YES can demonstrate between 5 – 10x return from investment in the wellbeing of young people with disabilities. We are excited that we can demonstrate the huge impact we can have financially, socially and culturally for vulnerable youth – it's not just the right thing to do, it is a brilliant impact investment opportunity for our funders.



5,100

Vulnerable members of our disabled community we're supported during the first four weeks of lockdown



YES has improved its equity position and now has a few months coverage of expenses

In January 2020, our CEO Sonia Thursby quietly passed her 10-year anniversary with YES. Sonia inherited a business which was in serious debt, had lost its way with our community and needed urgent action to turn it around. I'd like to thank Sonia for her amazing leadership through the last decade with YES, and especially for her leadership through the last 12 months where COVID-19, delivery of Shore Junction and our new strategy have created a relentless pace of change. Huge thanks also go to Sonia's team, who have tirelessly worked on behalf of our community and adapted through this period of change.

Lastly, financial sustainability is a topic close to my heart and a constant challenge for not-for-profits. YES has improved its equity position and now has a few months coverage of expenses, but we are ambitious about what we can do for our community and are keen to partner with private and public sector funders to create wellbeing impact for our community. Thank you to all our supporters over a dynamic 2020 period, we are ambitious and positive about the opportunity to create more impact and value for our community in 2021.

Paul Blair



Sue Stanaway

Chair of Foundation Trust

The vision of Lion Foundation House has always been to support community organisations with lower than market rents so they can provide their valuable services to the disability sector. We are fortunate to be in a position where we could offer rent reductions to our tenants during the COVID 19 lockdown when funding was uncertain but the need for services was even higher. Thankfully most of our tenants have been retained and continue to thrive in 'the house' environment. With all the challenges and changes over the past 6 months Sonia and the team at YES were an essential service and worked through the lockdowns, taking record numbers of enquiries and supporting and assisting people with disabilities and their families.

This year has certainly been a game of two halves, starting positively with construction commencing on Shore Junction in late 2019, with a successful completion of the build in March. We were then hit with Covid-19 lockdowns and it has taken until August to open our 'two floors of truly amazing' to our young people. It is very early days but the feedback from donors, supporters, our ambassadors and those young people who are starting to benefit from the youth innovation hub is that it is exceeding expectations. We have been humbled during the process with the input we have had from so many generous and committed supporters and the interest that has been generated. At a fundraising lunch (in between lockdowns) we were able to raise \$36,000 and with the construction fully paid we are now working with donors to ensure our ongoing operating costs are covered.



Two floors of truly amazing!

After opening in August, Shore Junction is exceeding expectations of supporters and those young people it serves

We have appointed our Centre Director and Youth Development Specialist and our In-house Technologist and feel that we have the right team to create the Blueprint for Shore Junction's future success.

This term two of our founding and highly valued Board members, John Spooner and Rod Slater resigned. We want to sincerely thank them for the amazing contribution they have made to the success of YES Disability Resource Centre, to the acquisition and full reduction of debt on the House, and for their unwavering support in the last decade. Jenna Broadhurst who is moving away from Auckland and Sarah Cross whose personal and new career commitments mean she is unable to continue have both resigned and again we thank them for their valuable input to YES.

Sue Stanaway

Sir David Levene

Our Patron

2020 has been a challenging year for everyone and especially so for many young people with disabilities and their families. As Patron of YES Disability I am enormously proud of the dedication of the team who, despite going through their own COVID issues, nonetheless managed to help over 5,000 people with complex enquiries and requests for support. The caring nature of the team means they overcome many barriers to provide essential services to people with disabilities to drive a collaborative community that is equitable for all New Zealanders.

Sir David Levene



Sonia Thursby

CEO

As I sit down to write this report for 2019–2020, I am wondering where to start in a year that was just unimaginable. 12 months ago, my report started with the words “it had been an invigorating and positive year.”

The first half of the year we were setting up regional I.Lead committees, workshops, conferences, sharing time with colleagues from around the country, meeting in Wellington with Government departments and planning for the national rollout of I.Lead.

Our goal has always been to support young people with disabilities to affect Government department’s policy and program documents. This I am proud to say we have done with “the inclusion of young people with disabilities” as a key strategic goal for the Ministry of Youth Development.

Our networks have grown, we have I.Lead representatives on a number of advisory groups including:

- **Oranga Tamariki** - Hear me see me advisory group
- **Human Rights Commission** – youth and domestic violence advisory group, Disability story collecting
- **Ara Taiohi** – contributing to the code of ethics working with diversity and online safety

- **Ministry of Education** – I am not a tick box, the Icebreaker workshops (anti bullying program) and the Disability/transition education to employment advisory group
- **Auckland Youth Voice** – Disability youth lenses on projects for 2021

YES was busy with the networks, locally with our very successful North Shore providers network, NZDSN Network, and Nationally to the NGO Council Forum. We also partnered with NZDSN to send Rachel to represent the disability sector in Washington DC and partnered with the Federation to support Josh to attend the I Create disability technology conference in Canberra.

And then all things changed at 11.59pm on the 25th March as a country New Zealand went into lockdown and YES went into overdrive, as young disabled people and their families went into confusion and in some cases crisis. The team at YES were in great demand, becoming the bridge between providers and young people. There were so many problems and issues to be solved, from PPE not being available, not allowing carers in to support, loneliness, isolation and fear. Technology became our new norm and our best friend, the team quickly went onto Zoom connecting, supporting and being the ‘go to’ people. There were competitions, storytelling, a buddy system and so much more to keep our young people engaged.



Strong network growth

Representatives from YES & I.Lead are now on several national advisory groups

Our North Shore providers network continues to be hugely successful

Rachel and Josh represented YES & our partnering organisations at disability conferences in the United States and Australia



An effective Covid-19 response

During the Covid-19 lockdown, YES was a vital bridge between providers and young people in need of immediate support across Aotearoa

The sector responded by coming together to do whatever we could to support the young people and their families. I spent, like many others, hours on Zoom with other providers and Government Departments, thinking on our feet, solution focused, no longer working in silos but together.



Shore Junction was well underway with the build and looking to open in March 2020, little did we know that would not happen and the build would have to stop. It would be another 6 months before our dream would become a reality with young people coming through the doors.

I want to say a huge thank you to the YES team, they went above and beyond, while dealing with their own personal family challenges during Covid-19, to our Board who supported, encouraged and stayed close to us. To our funders and donors who supported and made sure we had funding to continue in this difficult time. It was the year that was defined by tenacity, commitment and courage.

Sonia Thursby

Our reach

YES community relationships

350 individuals and organisations working in the disability sector were connected

Number of face-to-face meetings with young people:

1,405



Number of people supported over the first COVID-19 lockdown:

 **5,100**

Number of youth that attended a YES event or workshop:

14,000

YES social media reach:

135,000

Parenting Project social media interactions:

25,000



35,000

engagements across our social media channels



www.yesdisability.org.nz

33,000 visitors to our website

Our impact

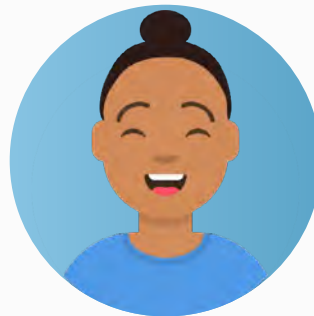
Supporting young people



Manu

Manu, 15, has an invisible disability. Like many disabled young people he was really struggling in lockdown, feeling depressed, overwhelmed, and suicidal. No one had contacted him or his family and he felt very alone. At YES we quickly realized that many of our young people with disabilities were slipping through the net with no support. We put an action plan in place and got in contact with all the young people who have ever contacted us. We put a wellbeing plan in place that included daily check-ins with a qualified youth worker, a friend tree (list of people to contact) and a gratitude journal. Manu was contacted by a member of the YES team everyday giving him someone to talk to, laugh with and feel part of the YES community.

"I am thankful for YES and the people that care about me, I wouldn't be here or want to be here if it wasn't for you. Hope after COVID? Nah hope for everything now"



Sefina

Sefina, 16, is a young woman in a wheelchair. Originally from Samoa, English is her second language. Sefina struggled to find the support she needed for herself and her family during COVID -19. YES helped Sefina access funding for personal care, food parcels and PPE gear. The team at YES helped organize an internet provider and explained how to set up the wifi box so that they could access the internet. This support ensured the whole family was able to keep learning through online schooling.

"It was good to be able to call just one place and get everything set up, when we had nothing and no one to call. I am so happy that my daughter has support from YES and knows that she can call you anytime. A trusted place that understands us and what we needed."



James

James, 19 is a young man with autism from Palmerston North. James works at the local supermarket and has never left his hometown. He had great opinions on how to make things better for young people with disabilities but no one listened to him. YES began working with James in 2019 and saw his passion for change. We invited him to the I.Lead conference in Wellington to talk to government about the things he wanted to see done differently. He was very excited, empowered and so proud that his opinions counted for something.

"I can't believe I got to come, I have never been to a conference before but even if I had this would have been the best one! So many people like me, so many new things to think about. I hope there is one every year. Can I.Lead and YES come to Palmerston North?"



Sarah

Sarah, 18, is a young woman in a wheelchair. She lives in a rural part of Auckland and relies on taxis and her parents to drive her places. She missed the freedom of driving that other young people take for granted. She was struggling to find employment that she could easily access, and the isolation was beginning to affect her mental well-being. Sarah tried to get her restricted license many times but found it too hard to study and concentrate. Sarah got in contact with YES and we told her about the 'I.Drive' programme. This helps young people with disabilities get their learner's license. Sarah got involved and quickly passed. She now has a new job she loves and she can make her own way there, giving her the freedom that all young people crave.

"I always thought I couldn't drive, that it would be too hard. But with YES I got my license, driving lessons in a modified car and last week I got my restricted license. I'm so excited next stop a modified car!"

I.Lead

Despite the challenges of 2020, I.LEAD has continued to grow and goes from strength to strength providing opportunities for youth with disabilities to “have a seat at the table” and to amplify their voices in these seats of power across Aotearoa.

I.LEAD was a monumental event. Not only was it the first ever Youth with Disabilities conference in New Zealand, it was located in a very important place to New Zealand Central Government, at Parliament Grand Hall in Wellington on the 3rd and 4th of September 2019.

The conference was a platform for young people with disabilities from across the country to come together to discuss their experiences with inequality and inaccessibility in New Zealand. I.LEAD provided the perfect staging area for these young people to voice concerns they had, discuss barriers they faced, and the hardships they endured. It was the perfect opportunity to present to important national decision makers solutions to help break down barriers, change mindsets and ultimately destigmatize the sector.

From its conception, I.LEAD was a safe space for young people with disabilities to voice their concerns and issues, and a platform for them to discuss solutions with Central Government and sector decision makers. This was one of the pillars I.LEAD stood for, and would culminate in the concept of creating a National Youth Advisory Panel that would work co-creatively with Central Government and policy makers to help implement these solutions.

The committee wanted to facilitate and lead the discussions that would happen around the table. They wanted the discussions to focus on areas where they had personal experience. The themes of Employment, Education, Housing, Health, Transport, Recreation and Sport were determined by the young people as major concern areas for them and their peers.

Though the task was daunting, they executed their role with poise, professionalism and compassion for their fellow peers. With an awesome support network, including certified Youth Development Specialists and Youth Workers, they succeeded in providing a safe place for everyone to speak openly about their experiences and the barriers they face as young people with disabilities.

They also went above and beyond this role, with some of the committee members taking centre stage to speak of their own experiences of barriers and inequities. Kramer Hoeflich, Chairman of the I.LEAD Organizing Committee, was one of only two key note speakers at the event. Kim Clark, a member of both the YEG and the I.LEAD Organizing Committee, stated in her speech:

‘My biggest dream is to live in a world where all people with disabilities and impairments are seen as having potential; to live in a world where all people believe they have value and feel empowered to be all that they can be.’ She also shared her experiences being part of the committee: ‘I.LEAD has taught me so many great things and I’ve grown so much over the whole experience. It was amazing because I saw where I was before and I see how the experience has pushed me to do greater things. I look back on my life and can see how every little experience I’ve had, has led me to that moment of leadership.’



I.LEAD became a catalyst for empowering young people with disabilities to become more proactive in their own communities. This was prevalent in the statistics garnered from the post-conference evaluation, with 95% of participants feeling they were part of a group of young leaders making change, and 86% of participants stating they were motivated to make change in their own communities.

Our work has been mentioned in many government documents, including the Youth Action Plan Disability Pillar and we have expanded with an I.LEAD Regional Group originating in Palmerston North that represents our youth with disabilities living in the Mid-Central Region. We are collaborating closely with this group to establish solid foundations of governance and policy that will inform the creation of other regional groups across the country.

We have been collaborating with local and central government entities, such as Hon. Carmel Sepuloni and the Ministry of Social Development, Disability Rights Commissioner Paula Tesoriero, Nicola Meek and the Ministry of Education, Brian Coffey and the Office of Disability Issues. The Ministry of Youth Development also partner with us and support the delivery of the I.Lead goals. With these partnerships, we have created a solid foundation for expanding our networks, building the relationships that would benefit us in helping to implement the 27 recommendations set out by the young people as part of last year’s conference.

Despite these challenging times, our movement has stepped up to the challenge of connecting with our youth with disabilities across the country, using our networks and connections to stay ahead of the numerous COVID-19 Lockdowns, and the subsequent effects that were being experienced by our peers. This level of connection allowed us to adapt to a new way of working, increasing our capacity to not only connect effectively, but to also provide support and information where it was most needed.

Throughout this year, I.LEAD has continued to strive, evolve and grow. And this is only the beginning. We hope to learn from the experiences of this year, the stories and voices of the disabled young people we serve, and the challenges we all faced, not only as a community, but as a country. We hope to use this as a driving force leading into the mahi next year brings, no matter what that looks like.

IIDL Conference

Rachel Peterson was selected to attend the International Initiative for Disability Leadership (IIDL) Conference in Washington as part of the leadership exchange programme. She presented to the youth with disabilities subcommittee on the subject of making the next conference in New Zealand more accessible and engaging for youth. YES is part of the organising committee for the 2022 event in New Zealand and will work hard to ensure it's the best one yet!

One of the key learnings that emerged from the conference was that there weren't enough inspirational leaders with disabilities in the international space. Work that YES are doing with I.LEAD plans to discuss this area further and bring some new ideas to the table.



Parenting Project

YES Parenting Project continues to provide information and support for parents with disabilities, both current parents and those who are expecting a new baby. It's been amazing to watch the Parenting Project grow when we have been an invisible group for so long. Strategically we have been providing important parenting insights to both the Welfare Review and the Family Court Review. Providing a disability parenting lense to these important Reviews has been momentous. The social media outreach of the project has also been amazing with over 25,000 interactions through facebook and Instagram.

The 2019 parenting Christmas party was an incredible highlight with 28 parents and children attending. When we ran a co-design workshop every single parent asked for a place where their children could connect with each other. They wanted them to know that they were not the only child who has a parent with a disability. The Christmas party was able to fulfil this in a simple and beautiful way.



I.Drive

I.Drive gives youth with disability the chance to gain their learners license, it's our most requested workshop and demand doubled over the last year, with a waiting list of over 20 young people. To meet this demand Josh attended an Auckland Transport train the trainer workshop and is now qualified to facilitate I.Drive workshops. I. Drive workshops are tailored to meet the needs of unique learners and has a 100% pass rate.



Project Employ

Project Employ believes that everyone has the right to work and to feel included as valued members of society. However, finding employment is hard for people with disabilities, which greatly limits the choices they have in other areas of their lives.

Our vision is to create a community where young people with intellectual or learning disabilities are engaged in meaningful, paid employment in the same way as any other member of society.

This year Project Employ has been focused on developing a programme that will support 18-30 year olds with intellectual or learning disabilities into meaningful employment. During a 1-3 year period, trainees will be supported to develop their employability skills through class-based learning, completing shifts in the Project Employ training café, and through community-based work experience.

Project Employ will be trialing a partnership with MSL Training, who will facilitate NZQA Foundation and Skills for Living courses, which will run alongside, and complement the other areas of the Project Employ supported employment programme. We have now interviewed, enrolled and held an orientation day for 18 young adults who are all extremely motivated to begin their journey towards meaningful, paid employment at the end of July.

Check out examples of our social return on investment report cards on the following pages

DHAVITA'S JOURNEY WITH YES: SOCIAL RETURN ON INVESTMENT CARD



DHAVITA

24 years old



Dhavita was born and raised in Aotearoa New Zealand, living in the South Auckland suburb of Ōtāhuhu. The eldest of four siblings, he grew up in a single-parent household, experiencing financial hardship throughout his education. Dhavita is passionate about music, the outdoors, and his family.

A range of invisible disabilities affect Dhavita, including autism, fetal alcohol spectrum disorder, dyslexia, dyscalculia, and post-traumatic stress disorder. These disabilities have challenged him throughout his journey, which at points has been extremely confronting, having the potential to derail his life completely.

Through a great display of resilience and courage, aided by a robust support network, Dhavita has overcome adversity in his life to create a promising future for himself. Today, he is an active advocate for youth with disabilities, involved with YES in its IceBreaker programme, the I.LEAD movement, and as a contributing member of the Youth Engagement Group.

DHAVITA'S QUALITY OF LIFE SCALES:



DHAVITA'S ASPIRATIONS

PERSONAL

- Be able to support his family
- Pursue his dream of creating and performing music
- Get his license and purchase a reliable vehicle

PROFESSIONAL

- Become a registered youth worker
- Be widely known as a respectful and trusted professional
- Work full-time hours in stable employment



DHAVITA'S BARRIERS TO SUCCESS

- The invisible nature of Dhavita's disabilities; causing common misconceptions of him in both his personal and professional life
- He is at a heightened risk of developing mental health and social issues due to the nature of his disabilities
- He is at risk of suicidal behaviour due to impacted mental wellbeing



DHAVITA'S IMPACT STATEMENT

"I'm making my dream a reality."

YES VISION STATEMENT: A COLLABORATIVE COMMUNITY THAT IS EQUITABLE FOR ALL NEW ZEALANDERS.



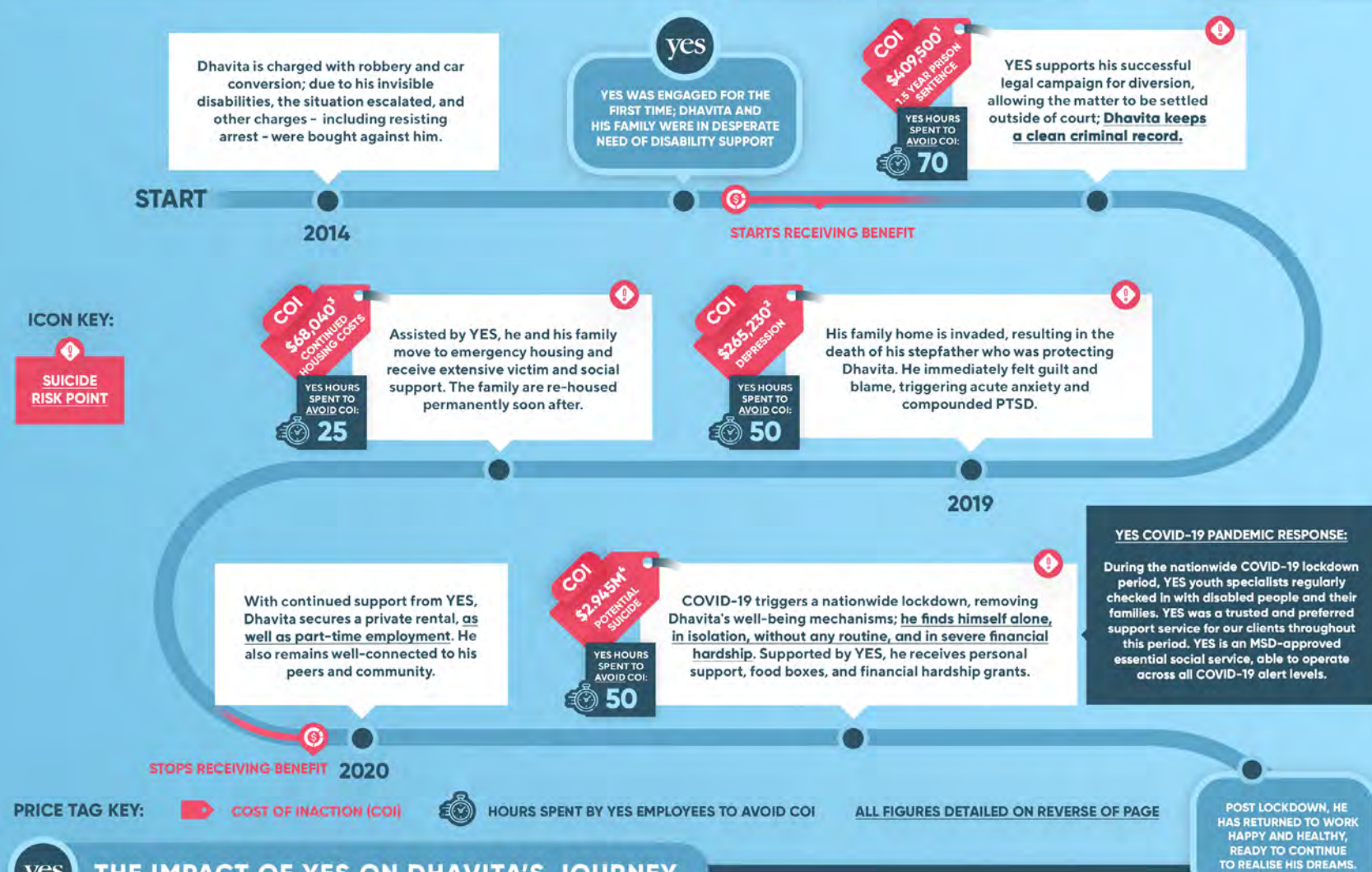
RETURN ON SOCIAL INVESTMENT: DHAVITA'S JOURNEY WITH YES

TOTAL COST OF INACTION

\$3,687,860

TOTAL YES HOURS SPENT TO AVOID COI:

195



THE IMPACT OF YES ON DHAVITA'S JOURNEY

PERSONAL

Through dedicated and professional support, YES has ensured that Dhavita gets a fair chance to succeed in life. Through social work, legal assistance, financial aid, and professional development opportunities, YES has helped him progress in the right direction – toward a bright, fulfilling, and independent future.

PROFESSIONAL

Professionally, YES has secured Dhavita a clean slate, allowing him to put his best foot forward in becoming a professional youth worker. Additionally, YES has enabled him to get work experience in the youth development sector through contributing to several of our initiatives, in which he has proven to be an incredible talent.

INCREDIBLE YOUTH

(DHAVITA): A RESILIENT, PASSIONATE YOUNG MAN

WORLD CLASS SUPPORT

(YES): A PRACTICAL, BESPOKE SUPPORT SERVICE

A PROFESSIONAL YOUTH WORKER WHO CHANGES THE LIVES OF THE YOUNG PEOPLE HE WORKS WITH

COPYRIGHT © 2020 YES | THIS DOCUMENT IS CONFIDENTIAL

I.LEAD EDUCATION & TRAINING RECOMMENDATION REPORT CARD

Education & Training



Miss Informed

Age:

On the wrong side of her teens, but on the right side of wanting to create change!

Key Drivers:

"We don't just want to ride the wave; we want to THRIVE in the waves. Give us the chance to succeed in education without assumptions"

"We have made huge changes over the years about the subjects taught at school to be more relevant to the types of work young people want to do in the future, have you thought about specific subjects for young people with disabilities, like community work or advocacy?"

Challenges:

"Someone that has strengths in cooking, arts, etc. but may lack skills in English and Math's are disadvantaged"

Education & Training Report Card

Funding for
disability supports

C-

Bullying prevention
programmes about
disability

D-

Teacher aid's
& reader writer's

B+

Teachers who take the
time to get to know
you and your disability

A+



Quick Wins

Make us aware of the commitments that have been made by the government in respect to education, we need to create ways of communicating the great work that education does and its commitments directly to the young people.

Implement the 'I Am Not A Tick Box' workshop with education providers and let's teach them our world view.

36%

of young people who attended iLead were in some form of education or training



8%

were attending school

18%

were attending university

Recommendations



Recommendation



Vote %



Commentary



Roadblock(s)



Enablers

Ensure that the specific perspectives of disabled people influence education wellbeing with a special focus on increasing emotional intelligence and resilience

90%

Create a flexible system for teaching that enables the creative pursuits of young people with disabilities to be recognised.

Lack of education and training provided to the education system on both invisible and visible disabilities, limited uptake on teaching profession to develop a co-design process with young people.

The development of national and regional advisory groups that provide disability specific advice to the Ministry of education.

With urgency, to have universal design embedded into our education system in both policy and practice

80%

Increasing inclusivity, accessibility for young people across the disability sector... Not just about widening doors and having ramps but going beyond this and creating a space where all people of all abilities are valued for their contribution to the learning and education environment.

Limited understanding of how adopting a universal design approach would enhance the sector.

Education and awareness about how universal design would be adapted for the education system.

Making sure that any changes to the curriculum, and pedagogy (how you teach) results in different learning styles being celebrated (including how success is measured), within five years

100%

Supporting action: the system needs to have an equal weighting system that recognises creative subjects (e.g. art, design, emotional intelligence, empathy etc) can be equal to math and other standard subjects.

This requires a fundamental shift in the way we teach, it also requires a transformational shift in how we educate our teachers and how we implement policy in the education system.

Taking schools and teachers that are willing to trail new methods of teaching and supporting them to do workshops and learning experiences that would provide a baseline of research to support making changes.

Shore Junction

The former RSA building in Takapuna has undergone a major makeover into a vibrant new North Shore Youth Innovation Hub – developed to provide an inspiring place for young people to connect, collaborate and create.

We are excited to be opening Shore Junction, a facility co-designed by young people and built with the generous support of a wide range of funding organisations, Devonport Takapuna Local Board and local philanthropists.

The RSA was a well known landmark, located on the corner of Northcote Road and Mary Poynton Drive, that has been completely transformed and reenergised into what is being dubbed as “two floors of amazing”.

Facilities include a fully fitted out digital suite plus an adjoining music room for budding musicians to experiment with different instruments, a creative dance studio and an art space. Much of the upstairs has been set up as a technology centre, with a focus on accelerating the knowledge and skills of STEM (Science, Technology, Engineering and Maths) creating a space for young people to build, code, plan and develop their skills.

Connecting with these areas are collaborative, break-out spaces with bean bags, whiteboards and large screens, which can also be set up for youth-led events.

We’ve set out to provide a place for young people to be all that they want to be and to accelerate their potential, build pathways to success and become tomorrow’s changemakers. The aim of Shore Junction is to save and enhance young lives as well as providing a safe haven creating a sense of belonging for all young people. A space where positive connections will increase their confidence, self-worth, sense of purpose and resilience.

Every aspect of Shore Junction has been co-designed with young people and community youth service providers. YOUNITE, the Local Youth Board for Devonport-Takapuna, helped drive the initial concept for the facility, its programme offerings and technology requirements.

Architect Matthew Godward and his team have done an amazing job converting those ideas into a stunning finished product and our building contractor Brosnan Construction has delivered the project on budget and to a high standard despite having to work around the COVID-19 lockdown. Everyone that’s been through the building so far has been blown away by what’s been created.



A special thanks

to the following people and organisations that help YES make a difference

Patron

Sir David Levene

Ambassadors

Cam Calkoen
Jaden Movold

Foundation Trust Board

Sue Stanaway (Chair)
Gary Monk
Rod Slater
Paul Blair
Linda Noble
Brendon Hosken
Sarah Cross
Hugh Stedman
Catherine Lamb
Katie Noble

Services Trust Board

Paul Blair (Chair)
Sue Stanaway
Linda Noble
Robin Paul
Jason Alexander
Lucy Anastasiadon-Hobbs
Gareth Berry

I. Lead Committee

Kramer Hoeflich (Chair)
Josh Fuimanono
Kim Clarke
Lavinia Lovo
Katie Derrick
Nizarath Ali
Tamara Grant

Youth Engagement Group

Kramer Hoeflich (Chair)
Rocky Rogers
Faithleen Tou
Naomi Vailima
Kauri Murray
John Nu-uausala
Grace Lee

Corporate Sponsors

Benefitz
Davanti Consulting

Grants and Donations (YES)

Auckland International Airport
COGS
Devonport / Takapuna Local Board
Foundation North
Good in the hood
Hibiscus and Bays Local Board
Kaipatiki Local Board
LeVA
Lion Foundation
Lotteries Commission
Ministers Discretionary fund
Ministry of Education
Ministry of Social Development
NetSafe
Oceanbridge
PH Picot Charitable Trust
St Patrick's Day Trust
Takapuna Rocks
United Way
Upper Harbour Local Board

Grants and Donations (Shore Junction)

Auckland Foundation
Devonport / Takapuna Local Board
Foundation North
Lion Foundation
Lotteries Commission

Get involved

We couldn't do what we do without our generous supporters. We'd love you to join us - and these are just some of the ways you can get involved.

DONATE

With just a single donation you can make a difference to a young person with a disability. [Donate via our website.](#)

JOIN A COMMITTEE

If you are a young person with a disability why not get involved with one of our committees and help support YES' vision. Get in touch with us via social media or our [website](#) to learn more.

CORPORATE SPONSORSHIP

Support from corporate partners is invaluable to ensure YES can support young people with disabilities. [Please get in touch if you think you can help us.](#)

Keep in touch

Website: www.yesdisability.org.nz
Phone: (09) 414 5360
Email: info@yesdisability.org.nz
Address: [3 William Laurie Place, Albany, Auckland, 0752](#)



